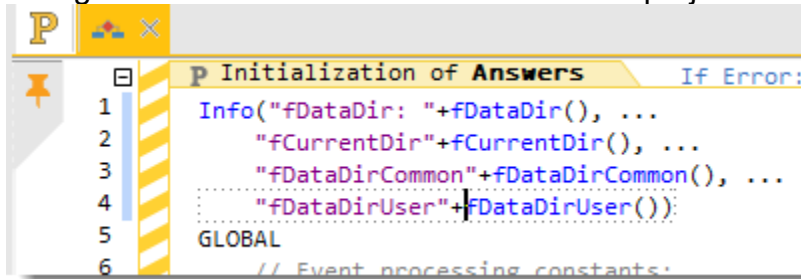


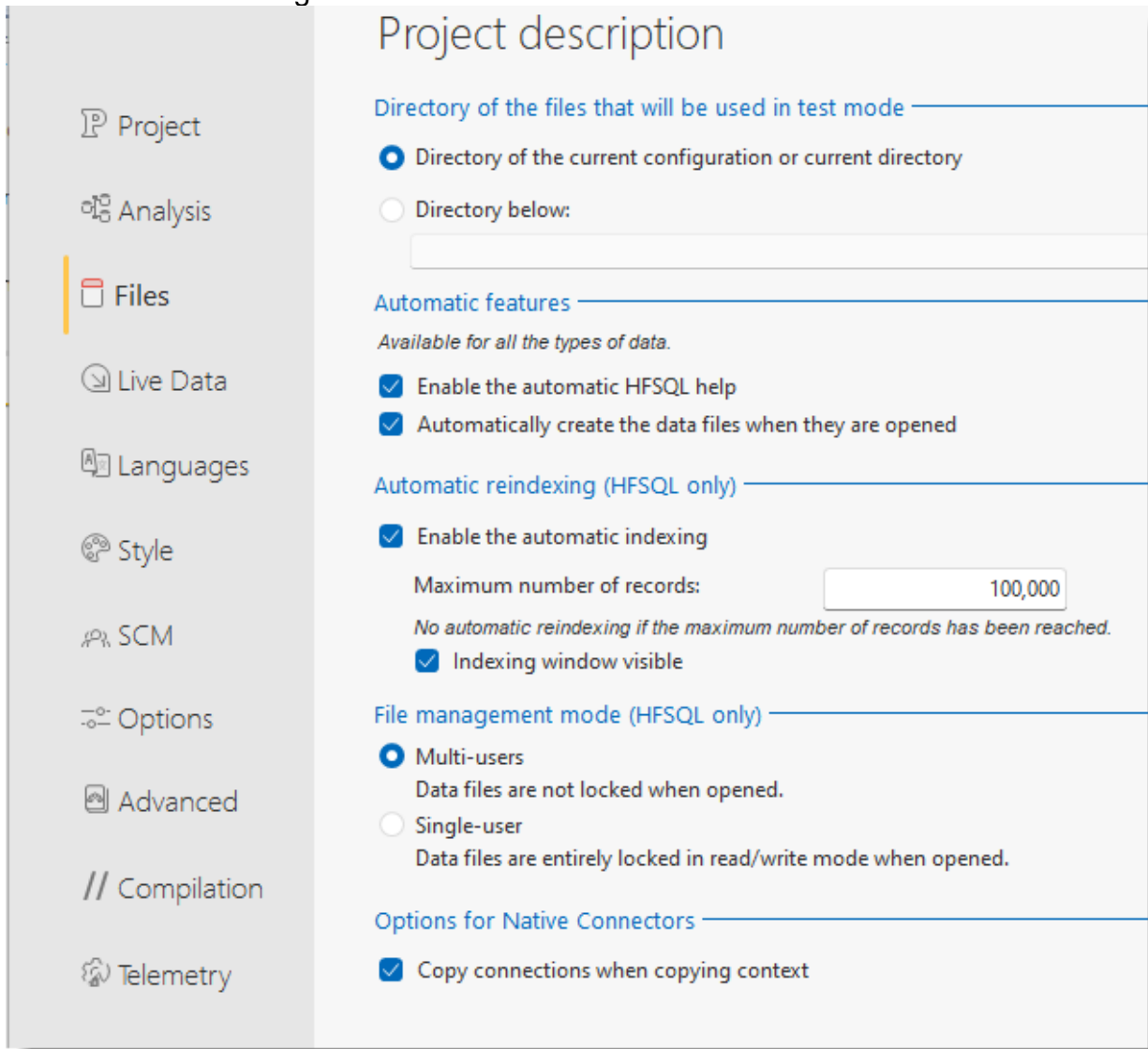
## More Information on reported problem ST/H104562

I created a new project in WD2024 and imported the project files creating two configurations. Then I added this code in the project element code:



```
1 Info("fDataDir: "+fDataDir(), ...
2     "fCurrentDir"+fCurrentDir(), ...
3     "fDataDirCommon"+fDataDirCommon(), ...
4     "fDataDirUser"+fDataDirUser());
5 GLOBAL
6 // Event processing constants:
```

This is the Files setting for the above:



**Project description**

Directory of the files that will be used in test mode

- Directory of the current configuration or current directory
- Directory below:

Automatic features

*Available for all the types of data.*

- Enable the automatic HFSQL help
- Automatically create the data files when they are opened

Automatic reindexing (HFSQL only)

- Enable the automatic indexing

Maximum number of records:

*No automatic reindexing if the maximum number of records has been reached.*

- Indexing window visible

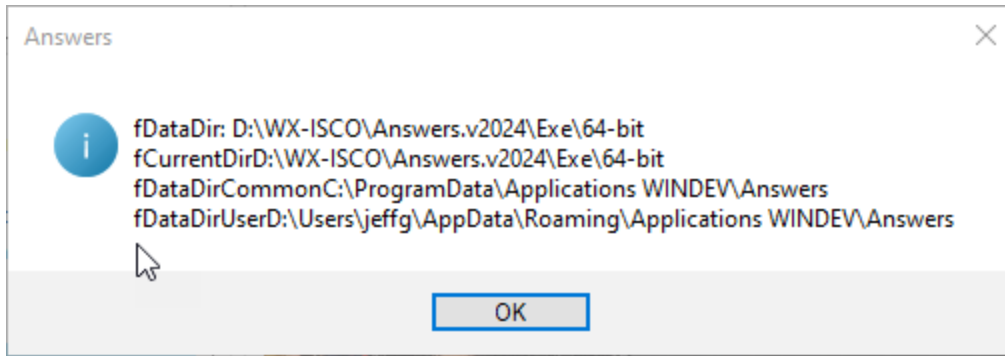
File management mode (HFSQL only)

- Multi-users  
Data files are not locked when opened.
- Single-user  
Data files are entirely locked in read/write mode when opened.

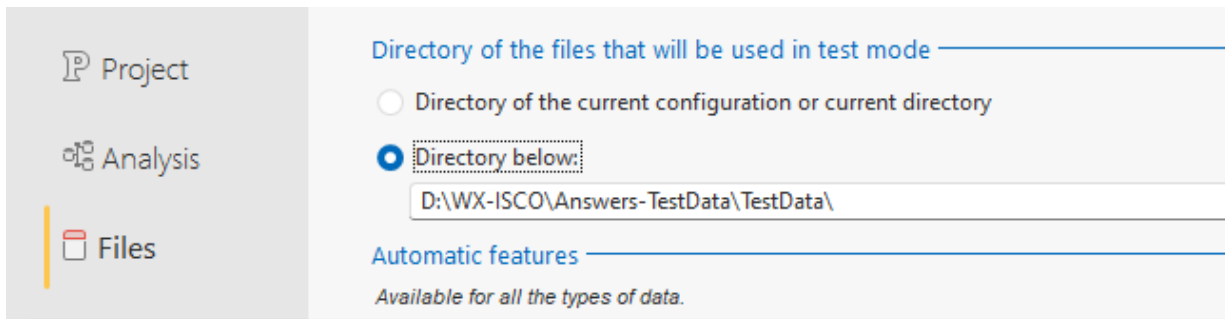
Options for Native Connectors

- Copy connections when copying context

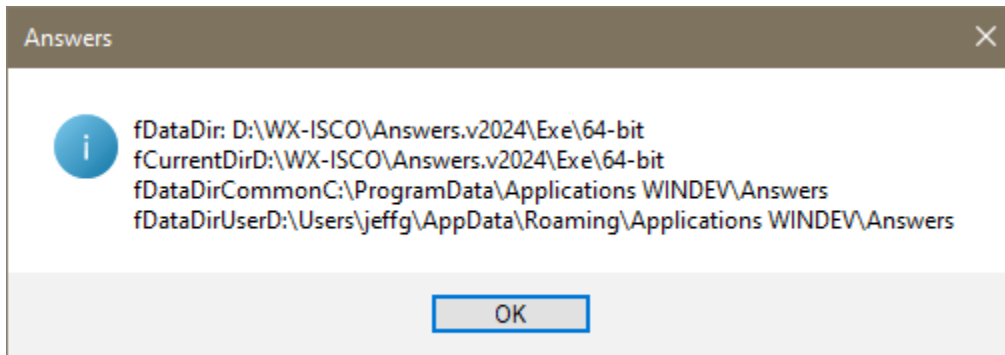
The info output for the above:



I then changed the Files setting to:

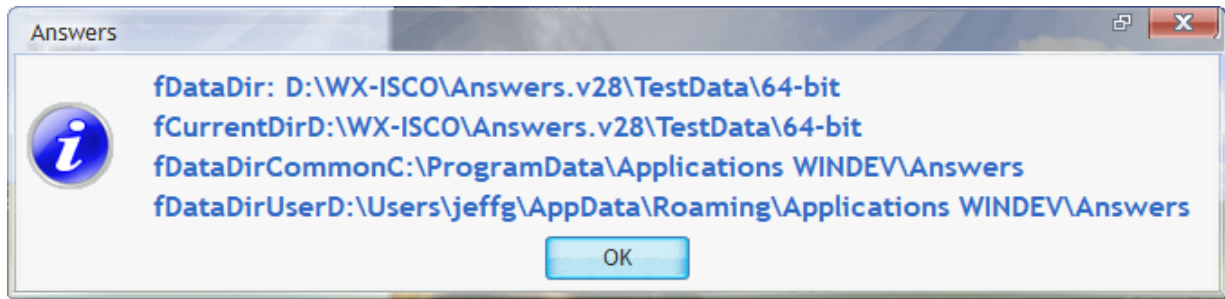


And still the output is:



My conclusion is that when I upgraded the copy of the WD28 project, the Files setting was set to D:\WX-ISCO\Answers.v28\_Restored\TestData and that is why my WD2024 always used that address.

I also suspect the problem started in WD28 since if I rename the v28 project to D:\WX-ISCO\Answers.v28\_Restored I still get this output:



This did not occur with versions prior to WD28!